



FIG. 1

HANDLATHE MOTORCYCLE PARTS MANUFACTURING
Applicant

BY:


JOHN CARLO MATHIAS M. FIGUEROA
General Manager



FIG. 2

HANDLATHE MOTORCYCLE PARTS MANUFACTURING
Applicant

BY:

JOHN CARLO MATHIAS M. FIGUEROA
General Manager

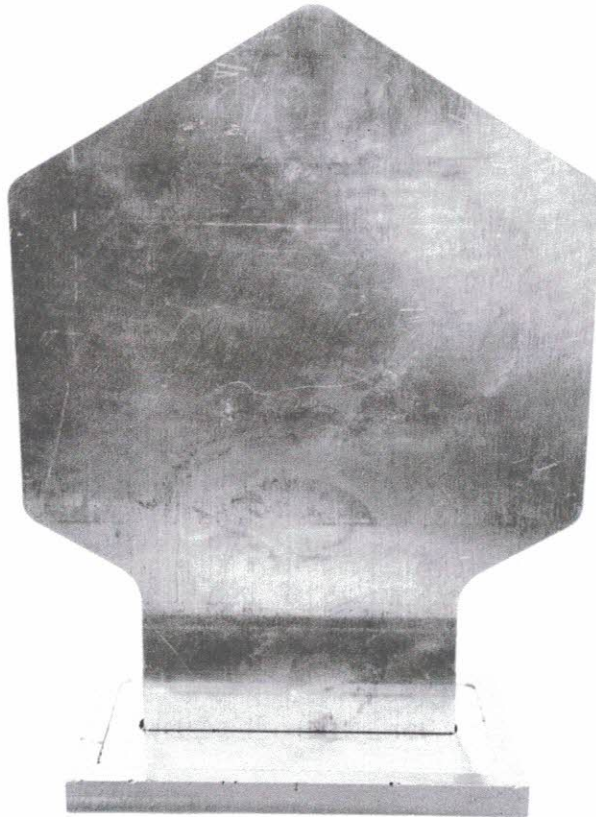


FIG. 3

HANDLTHE MOTORCYCLE PARTS MANUFACTURING
Applicant

BY:

JOHN CARLO MATHIAS M. FIGUEROA
General Manager



FIG. 4

HANDLATHE MOTORCYCLE PARTS MANUFACTURING
Applicant

BY:

JOHN CARLO MATHIAS M. FIGUEROA
General Manager



FIG. 5

HANDLATHE MOTORCYCLE PARTS MANUFACTURING
Applicant

BY:

JOHN CARLO MATHIAS M. FIGUEROA
General Manager

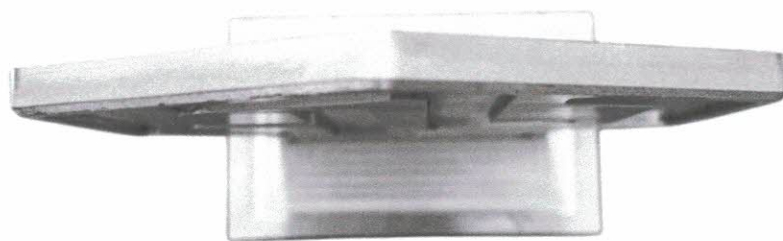


FIG. 6

HANDLATHE MOTORCYCLE PARTS MANUFACTURING
Applicant

BY:


JOHN CARLO MATHIAS M. FIGUEROA
General Manager

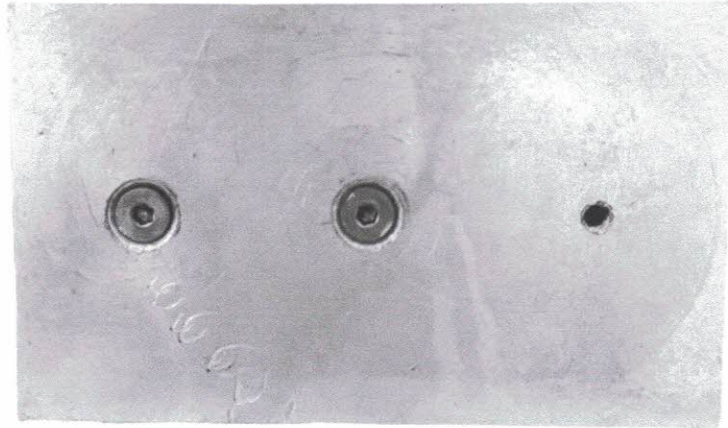


FIG. 7

HANDLATHE MOTORCYCLE PARTS MANUFACTURING
Applicant

BY:


JOHN CARLO MATHIAS M. FIGUEROA
General Manager